



Copyright: S. Werner

Status-Quo of the EMMA



Stefan Breitenbach

Head of Project Department

Port of Hamburg Marketing



The Interreg Baltic Sea Region Programme Project EMMA



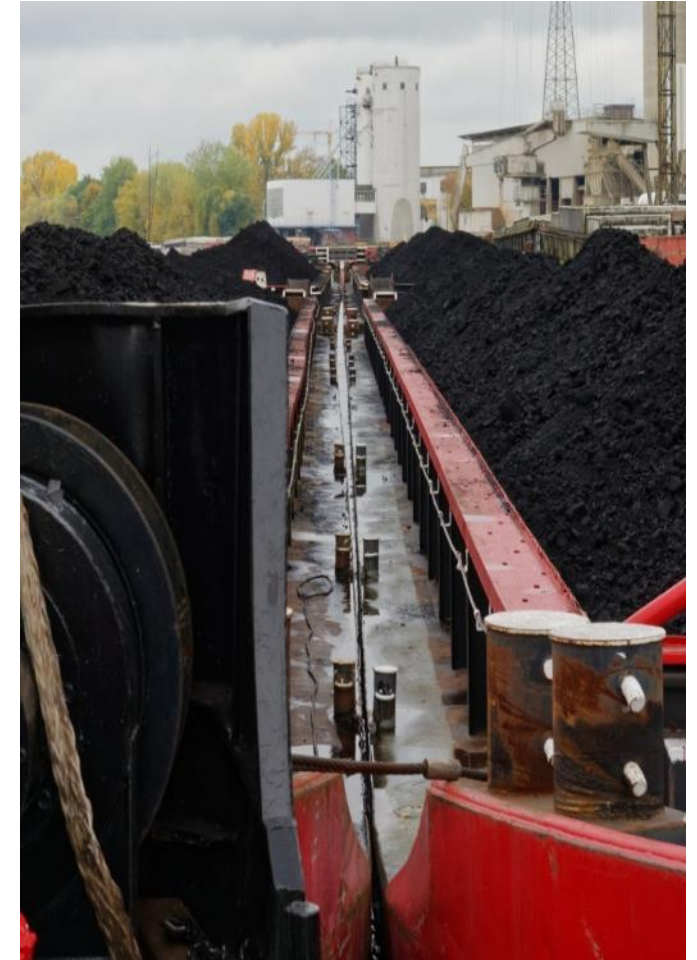
...AIMS TO ENHANCE INLAND NAVIGATION IN THE BALTIC SEA REGION

*Enhancing freight **M**obility and logistics in the BSR by strengthening inland waterway and river sea transport and pro**M**oting new intern**A**tional shipping services*

- Lead Partner: Port of Hamburg Marketing
- Project Partners: 20 (from DE, FI, LT, PL, SE)
- Associated Partners: 45+

- Funding Programme: Interreg Baltic Sea Region Programme
- Project Budget: 4.42 million €
Thereof ERDF co-financed: 3,45 million €

- Project duration: 3/2016 – 2/2019



EMMA – A Stakeholder Platform to Discuss and Promote IWT



Some Impressions



PILOT ACTIONS AND DEMONSTRATIONS

Sweden – Gothenburg area (Lake Värnen)

Transport shift from road to inland waterways
in Lake Värnen area

Finland – North Karelia (Saimaa Canal & Lake Area)

Enhancing IWT in Saimaa canal and lake area

Germany (North German river basin)

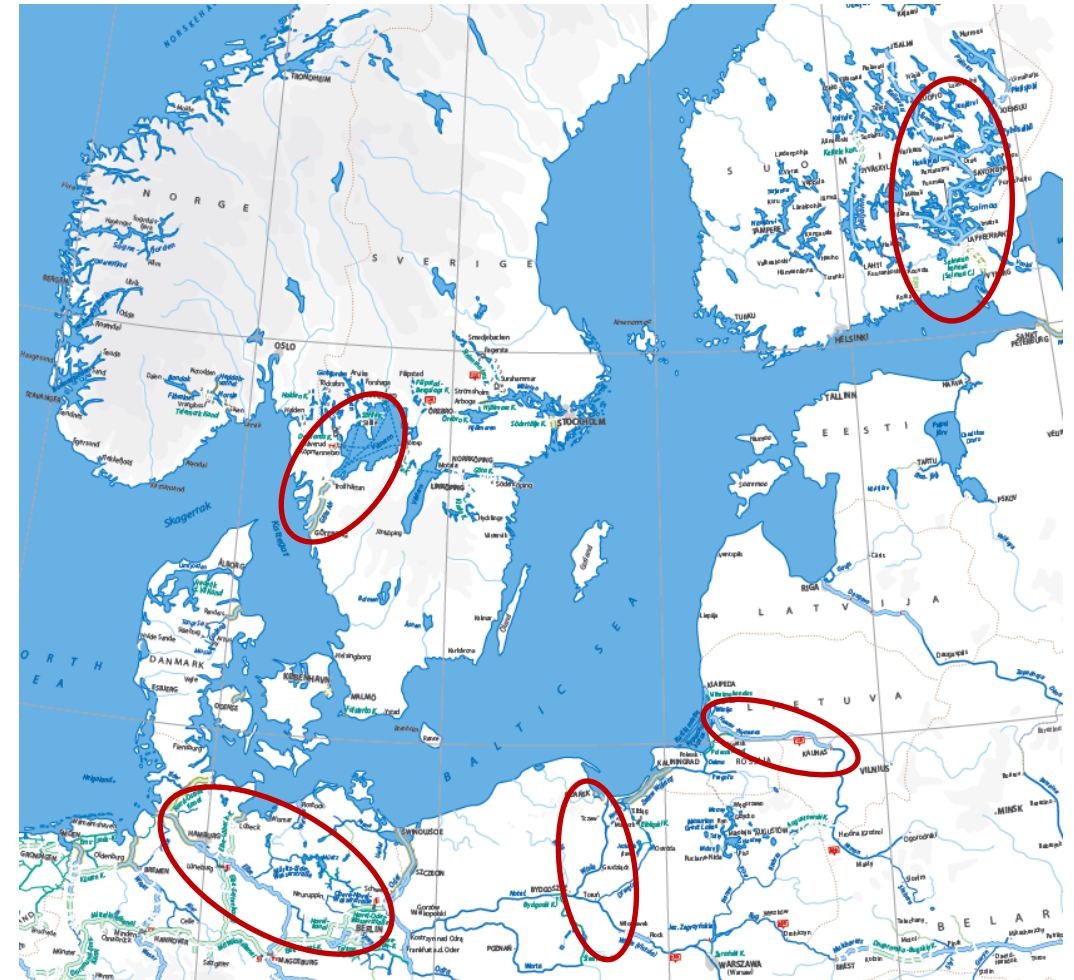
Digital map with status information on inland waterways (RIS)

Poland – Gdańsk (the river Vistula)

Feasibility study for a multimodal inland terminal

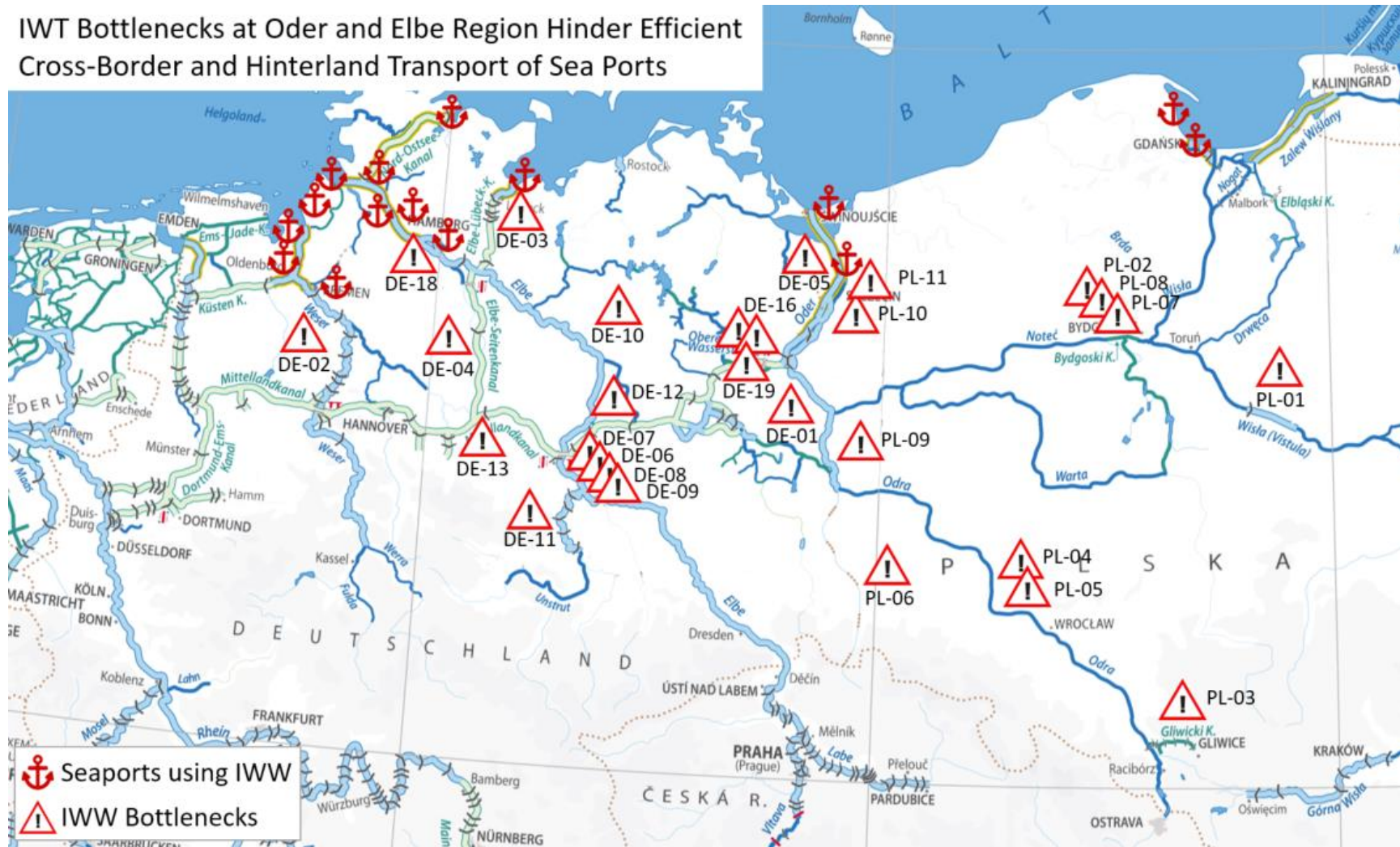
Lithuania – Klaipėda (the river Neman)

Heavy goods transportation from the Port of Klaipėda
to the hinterland | Concept to retrofit diesel propulsion system



IWT Bottleneck Identification in the BSR

IWT Bottlenecks at Oder and Elbe Region Hinder Efficient Cross-Border and Hinterland Transport of Sea Ports



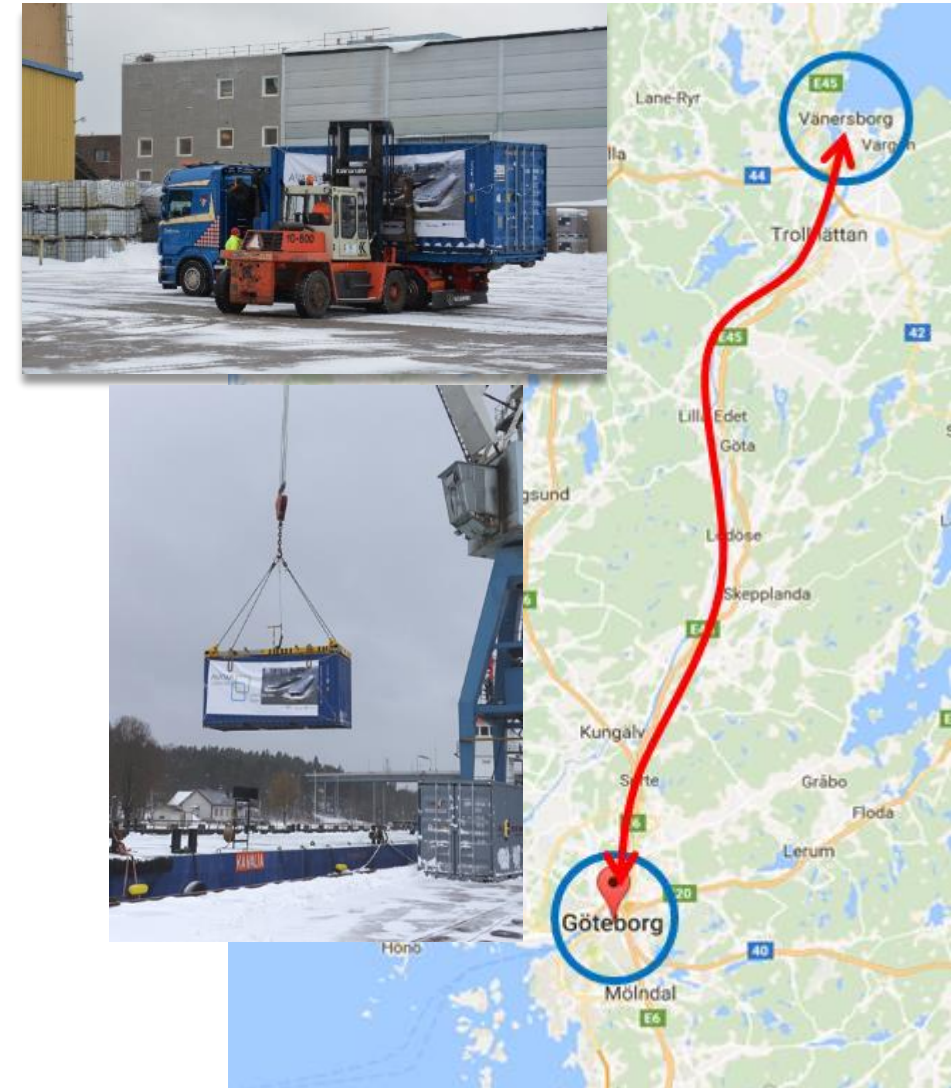
IWT - A new transport mode in Sweden.

- A pilot voyage was successfully proven (03/2017)
- Excellent fairway conditions & a lot of free capacity
- Rules and regulations mainly based on IMO/SOLAS shipping
- Public awareness needed

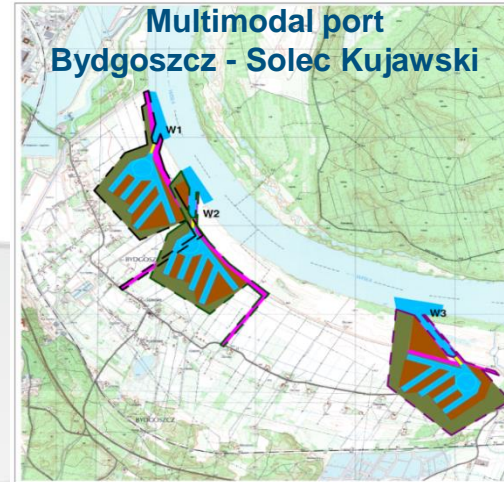
Uncertainties on winter navigation

- EMMA “Ice report” published to illustrate ship-design solutions
- www.project-emma.eu

Vessel Traffic Service (VTS) used in Finland and Sweden,
River Information Service (RIS) used in central Europe.



From Gdańsk to Warsaw



The cruise in a nutshell

- 70 m push convoy loaded with 20 containers
- Daily distance travelled: 20-80 km (in total 440 km)
- Simultaneous research on river and infrastructure
- Demonstrative handlings: 2
- Events in cities: 7
- Workshops on board: 7
- Press conferences: 5

Planning of a multimodal port near Bydgoszcz

Germany/Elbe Region – IWW Associations Join Forces



Cooperation is Key to Achieve a Change

Joint Declaration to Enhance IWT at Elbe and Odra Region



Merger of IWW Associations to Strengthen the Voice



Conference aims:

- To present a clear vision on how IWT might look like in 2030 within the BSR
- To present the EMMA main outcomes and the policy paper on IWT.
- To create awareness of IWT potentials in the BSR.
- To sell a vision about enhanced IWT services in the BSR.

Target group:

EU COM (DG Move, DG Finance) | EP (TRAN, FINANCE) |
TEN-T Coordinators | PACs Transport EUSBSR |
Committee of the Regions | Diplomatic missions in Belgium |
European IWT Associations | EMMA PPs' | IWT Stakeholders



Clear BSR Strategy to Lift IWT Potentials is Needed

- IWT integrated in multimodal logistic solutions
- Respect the different characteristics of waterways
- Transition points between different waterway classes and there interlink
- Inclusion of a clear strategy for the uptake of alternative fuel technology
- Inclusion of a clear ITS strategy (RIS/ VTS Services)
- Harmonised national rules and regulations
- Investments to strengthen and modernise infrastructure is needed (shore site and on-board)
- European Inland Waterway Transport Knowledge Platform
- Smart and Innovative Strategic IWW Transport Projects





Thank you for your attention.



Stefan Breitenbach

Head of Project Department

Port of Hamburg Marketing



@project_emma



www.project-emma.eu

