



Copyright: S. Werner

# Inland Navigation in the Baltic Sea Region



Port of Hamburg Marketing Reg. Assoc.

Stefan Breitenbach

Head of Project Department

T. +49 40 37709 121 | E. [breitenbach@hafen-hamburg.de](mailto:breitenbach@hafen-hamburg.de)



EUROPEAN  
REGIONAL  
DEVELOPMENT  
FUND

23<sup>rd</sup> June 2021



# The EMMA Extension Project



...Aims to Enhance Inland navigation in the Baltic Sea Region

*Enhancing freight **M**obility and logistics in the BSR by strengthening inland waterway and river sea transport and pro**M**oting new intern**A**tional shipping services - Extension*

- Lead Partner: Port of Hamburg Marketing
- Project Partners: 7 (DE, FI, LT, PL, SE)
- Funding Scheme: Interreg Baltic Sea Region Programme
- Project Budget: 999,075 thousand €  
Thereof ERDF co-financed: 778,095 thousand €
- Project Duration: 08/2019 – 07/2021



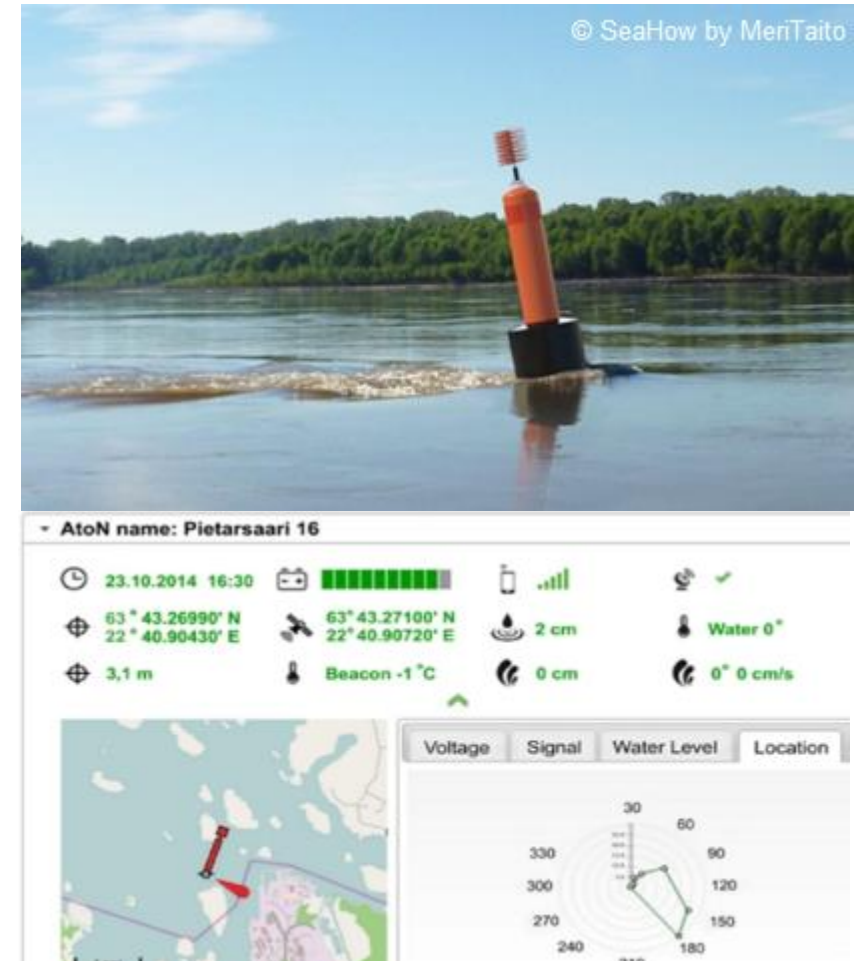
# EMMA Extension – A Stakeholder Platform to Promote IWT

## Some Impressions



## Supports Digitalisation in IWT: RIS & Smart Fairway Services

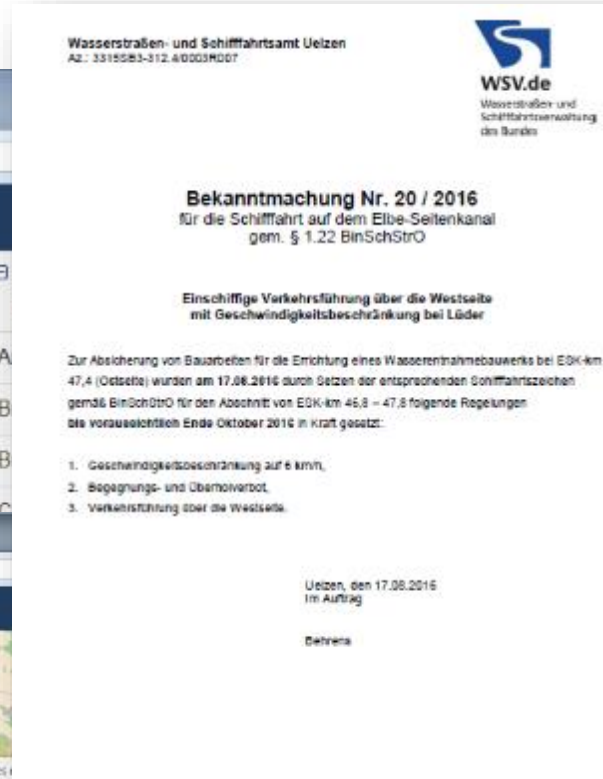
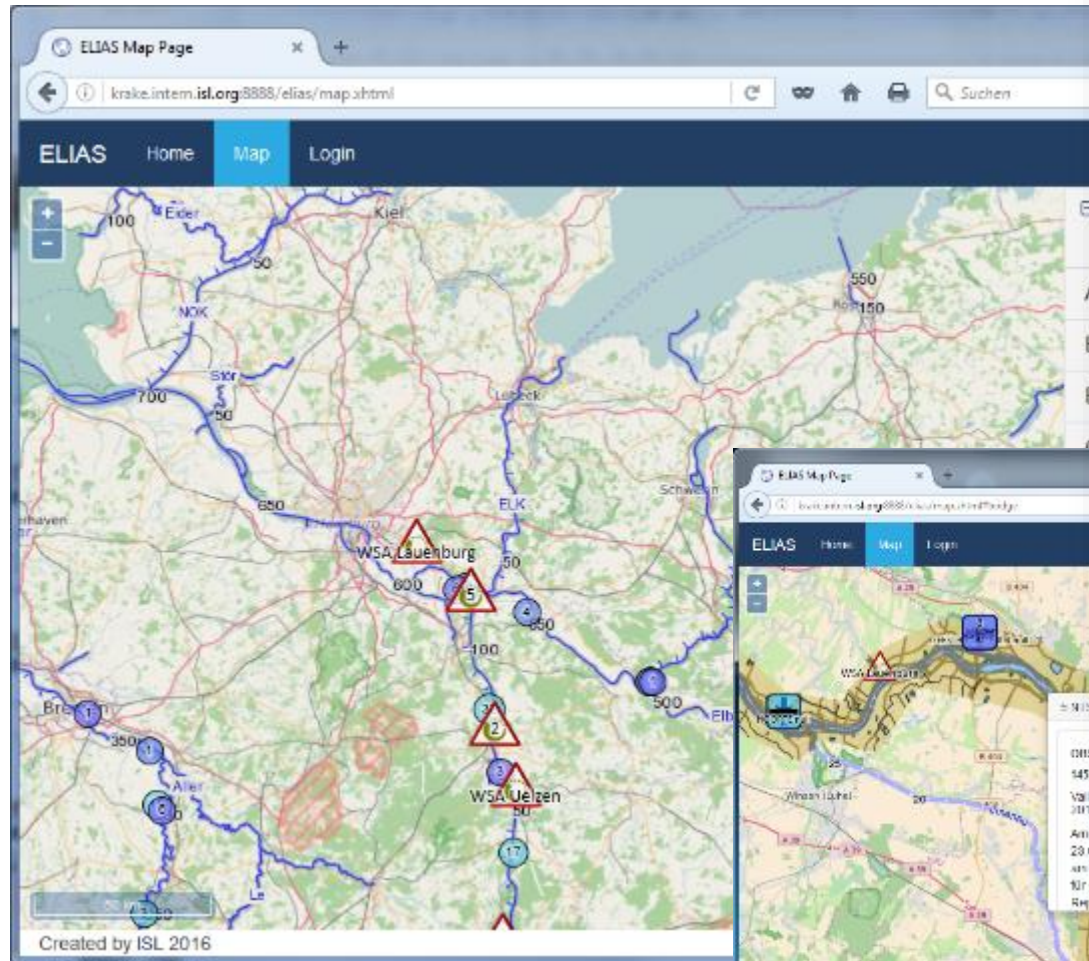
- Finland: Implementation of smart fairway technology  
→ Digitalized buoys
- Poland: Implementation of automatic readings of safe clearances under bridges at Odra River in Szczecin (radar sensors and electronic information boards)  
Clearance values will be showed to skippers in real time
- Germany: Link digitalized data services and functionalities to ELIAS, e.g. real-time data regarding bridge clearance



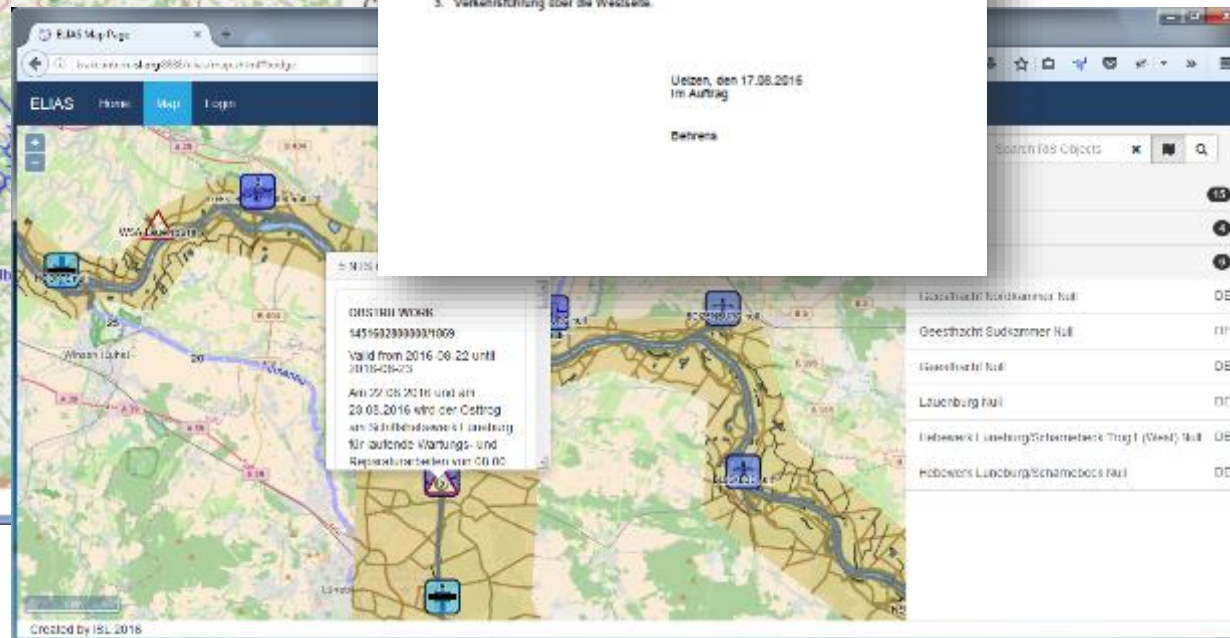
- 34 smart buoys were installed in the Saimaa deep fairway
- The implementation took place in Haukivesi-Joensuu fairway section connecting North Karelia to other inland waterway sections in Saimaa area and to Saimaa Canal.
- The technology inside the buoys, produced at Meritaito's factory in Joensuu, makes shipping safer and maintaining of fairway easier.
- Download Smart Fairway Implementation Report: [www.project-emma.eu/sites/default/files/2020.10.20.%20Smart%20Fairway%20Implementation%20Report.pdf](http://www.project-emma.eu/sites/default/files/2020.10.20.%20Smart%20Fairway%20Implementation%20Report.pdf)



## “ELIAS” FUNCTIONALITIES



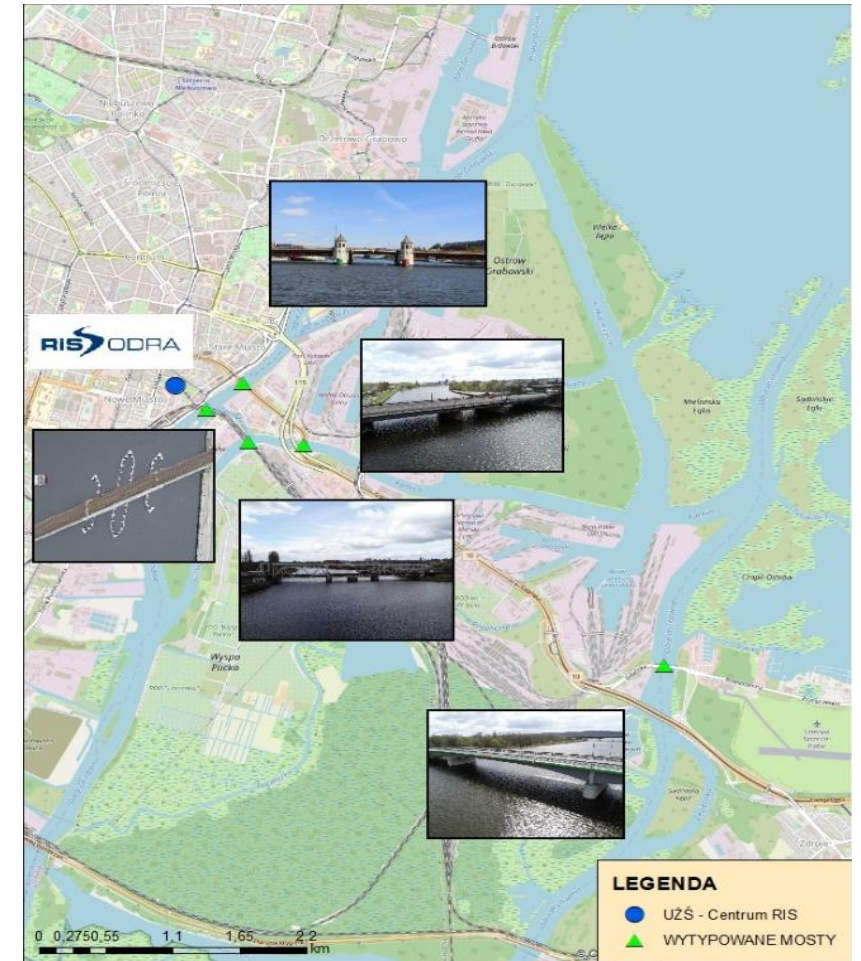
- Browsable map pan & zoom
- Info on RIS objects
- Geocoded NtS message display
- Link to external details



RISECDIS  
RISNTS  
RISVTT

## Implementing Bridge Clearance Solutions – EMMA project summary

- Concept of building an automatic indication system for safe clearance under the bridge.
- Accuracy and quality analysis (as-built) of the implemented system
- Integration to RIS Center Poland



## Implementing New Logistic Concepts in Lithuania

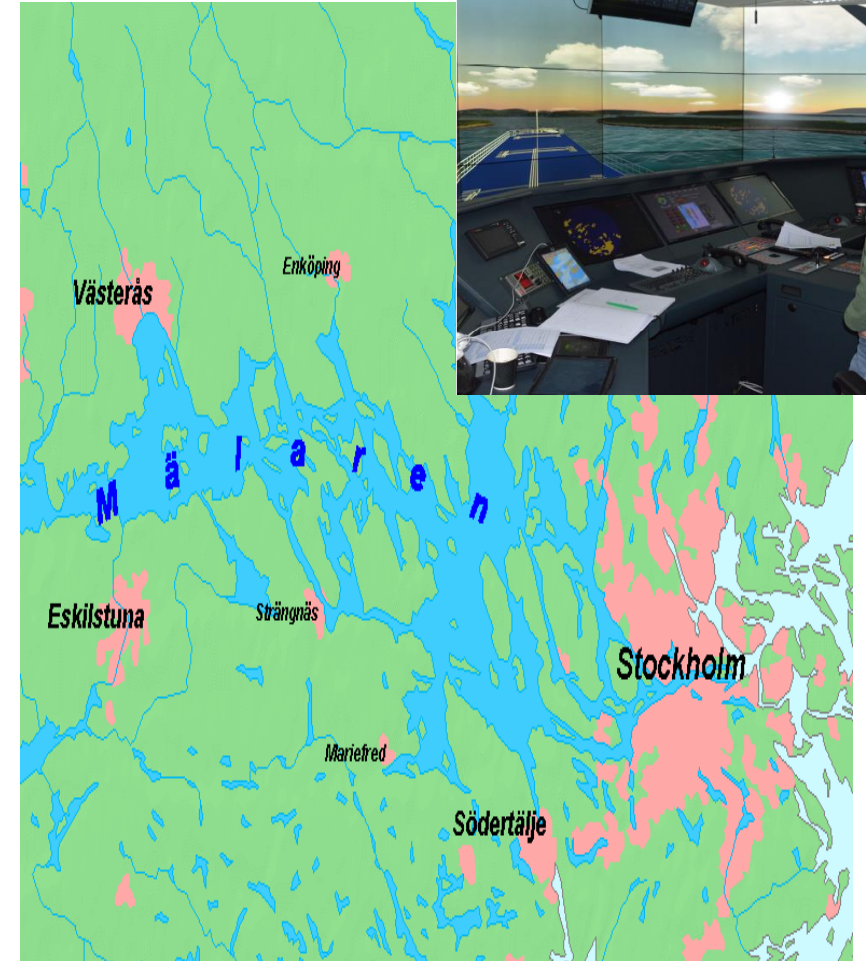
- Commercial barge pilots showcase feasibility of IWT services in supply chains and promote IWT to cargo owners and forwards in emerging IWT markets
  - Neman River - pilot sailings
  - Container shuttle on the route Klaipėda – Kaunas
  - Oversize cargo delivery successfully demonstrated in May 2021
- Stakeholders' involvement:
  - 2019 – 2021 investment of 2.6 millions for purchase of machinery for maintenance work between Belarus and Lithuania
  - 2019 – 2023 investment of 27 millions to E41 inland waterway repair jobs





## Implementing New Logistic Concepts in Sweden

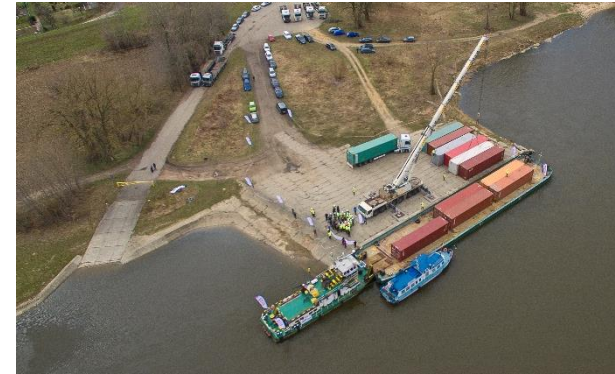
- Simulation and development of a new IWT zone in Sweden from Göteborg to Lysekil
- Linking the biggest refinery on the West coast to IWT Zone
- Enabling new IWT business and logistic solutions in additional areas in Sweden
- Based on EMMA results a first IWT service started in June 2021 (Deymann) with a bi-weekly service between Stockholm Norvik – Västerås



## Implementing New Logistic Concepts in Poland

- Commercial barge pilots showcase feasibility of IWT services in supply chains and promote IWT to cargo owners and forwards in emerging IWT markets

- Vistula River - pilot sailing from Port of Gdańsk to Chełmno
- Total distance shipped: 300 km
- Volume transported: 300 ts
- Load: *medical, furniture, food sector*



## Contact Details 1/2

- Finland      **Smart Fairway Technology**  
Jukka Hasu, Regional Council of North Karelia  
T. +358 50 3222 627 | E. [jukka.hasu@pohjois-karjala.fi](mailto:jukka.hasu@pohjois-karjala.fi)
- Germany      **RIS Functionalities (ELIAS)**  
Arne Gehlhaar, ISL - Institute of Shipping Economics and Logistics  
T. +49 421 22096- 49 | E. [gehlhaar@isl.org](mailto:gehlhaar@isl.org)
- Lithuania      **Commercial Pilot on Neman River**  
Dainius Balevičius, Lithuanian Inland Waterways Authority  
T. +370 645 50897 | E. [dainius.balevicius@vvkdt.lt](mailto:dainius.balevicius@vvkdt.lt)



Regional Council of  
**NORTH KARELIA**



Raudondvario pl. 113, LT-47186 Kaunas

## Contact Details 2/2

- Poland Automatic Readings of Safe Clearances Under Bridges

Piotr Durajczyk, Inland Navigation Office in Szczecin

T. +48 91 43 40 279 | E. [durajczyk@szczecin.uzs.gov.pl](mailto:durajczyk@szczecin.uzs.gov.pl)

### Commercial Pilot on Vistula River

Rafał Modrzewski, Marshal's Office of Kujawsko-Pomorskie Region

T. +48 56 62 18 487 | E. [r.modrzewski@kujawsko-pomorskie.pl](mailto:r.modrzewski@kujawsko-pomorskie.pl)



- Sweden IWT Zone Development

Johan Lantz, AVATAR Logistics

T. +46 73 866 4645 | E. [johan.lantz@avatarlogistics.se](mailto:johan.lantz@avatarlogistics.se)





Thank you for your attention!



Port of Hamburg Marketing Reg. Assoc.

Stefan Breitenbach

Head of Project Department

T. +49 40 37709 121 | E. [breitenbach@hafen-hamburg.de](mailto:breitenbach@hafen-hamburg.de)



@project\_emma



[www.project-emma.eu](http://www.project-emma.eu)

